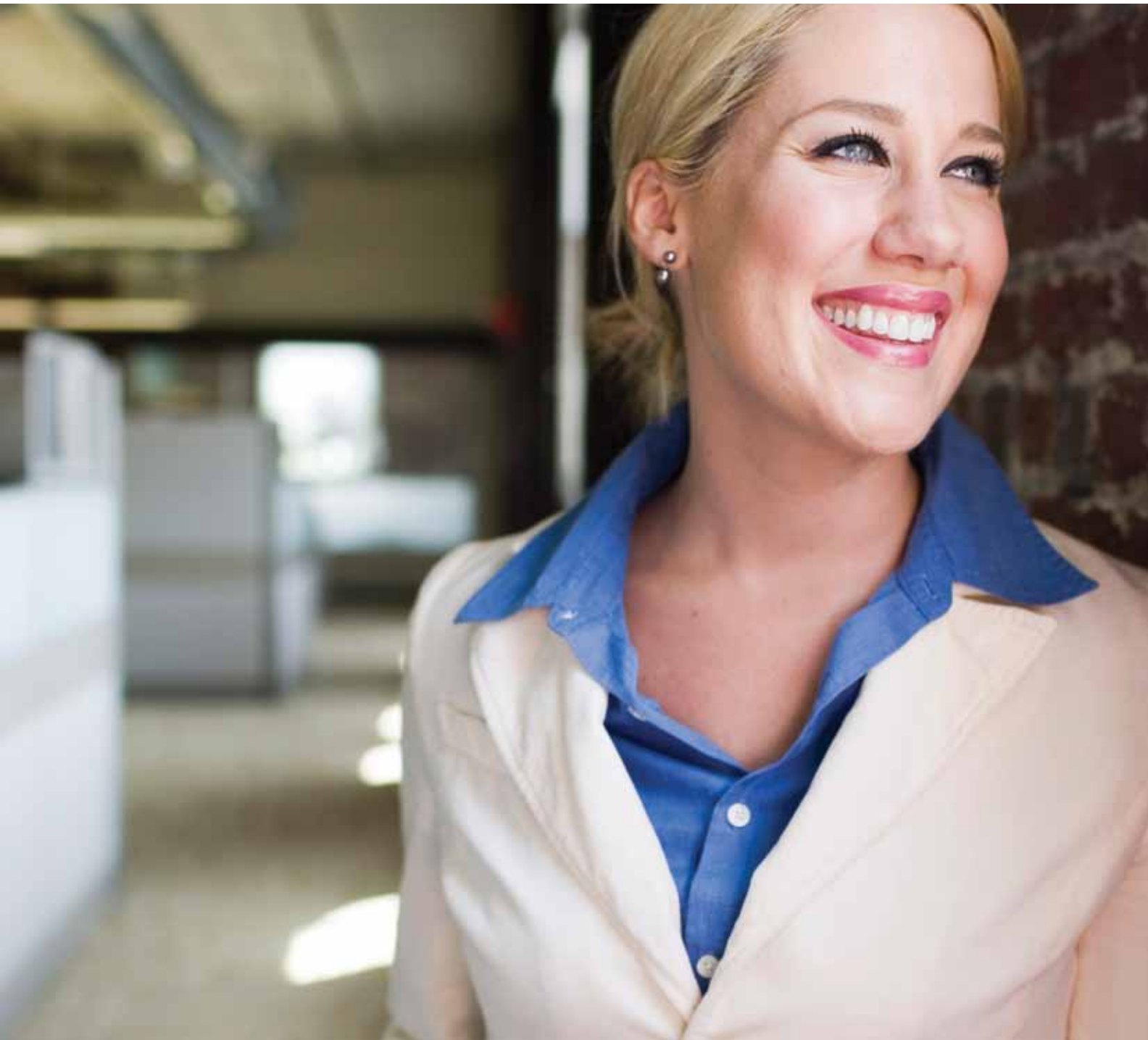



Alcatel-Lucent VitalQIP Appliance Manager

End-to-end, feature rich,
appliance-based DNS/DHCP
and IP address management

Alcatel·Lucent 



A high-angle, close-up photograph of two business professionals, a man and a woman, looking down at a document on a desk. The woman is in the foreground, her face partially visible as she looks intently at the paper. The man is behind her, also looking at the document. The lighting is soft and professional. A decorative dotted line runs horizontally across the top of the image.

STREAMLINE MANAGEMENT AND CUT ADMINISTRATIVE COSTS WITH THE ALCATEL-LUCENT VitalQIP APPLIANCE MANAGER

Alcatel-Lucent is a proven global provider of market leading IT management solutions. Our solutions can maximize profitability and productivity and help you leverage IT investment for a competitive advantage. The Alcatel-Lucent award-winning VitalQIP software is used today by more than 850 customers worldwide, including over 50 percent of the Fortune 100 companies.

VitalQIP is a next-generation solution for automating address management services across IPv4 and IPv6 networks.

In today's complex networking world, it is critical to have reliable, secure, low cost address allocation and management software that keeps an enterprise network running smoothly every day.

The VitalQIP Appliance Manager portfolio provides a seamless, cost-effective way to deploy and maintain VitalQIP DNS/DHCP and IP Address Management software on an integrated appliance platform that includes customized remotes and automated software patching, monitoring either on a certified hardware appliance or a virtual package.

BENEFITS

Fully integrated with the market leading VitalQIP software:

- Everything that's needed for a fully integrated, end-to-end appliance solution for VitalQIP software
- Automated deployment of critical IP name and address services
- Simplified software upgrades and centralized deployment and monitoring of IPAM, DNS, DHCP, TFTP, NTP, SNMP, and other services
- Secure services with hardened OS (RedHat Linux®) preloaded onto the appliances
- Streamlined management which cuts administrative costs
- Flexible deployment models and virtual options



Automates deployment of services

IP name and address services are essential to service availability and end-user performance capabilities. If end users are unable to obtain an IP address, they can't communicate or complete tasks essential to your business success. If application host names are not quickly resolved by programs in end users' PCs, connecting to these applications and other services is difficult if not impossible.

Consolidating all IP address information in a single location ensures that your geographically dispersed network administrators can access the same IP database. This eliminates duplication of administrative efforts and allows you to maintain a consistent IP inventory network-wide. Administrative efficiency is also increased from hosting IP address management services such as DNS and DHCP on specialized hardware appliance platforms while improving security and uptime.

The VitalQIP Appliance Manager offers the latest multi-core Intel-based architecture combined with the hardened Red Hat Linux operating system as well as a web-based graphical user interface (GUI) that is used to seamlessly manage deployment, apply patches and upgrades, and monitor IPAM, DNS, DHCP and other services.



VitalQIP Appliance Management Software

The centralized VitalQIP Appliance Management Software (AMS) maintains an inventory of software packages and appliances and is easily launched from the VitalQIP web-based GUI. Also included for security is a token-based appliance authentication process.

Deployment, upgrades and maintenance is simplified by configuring services on the AMS GUI before deployment and by logically grouping the appliances. Remote services, such as DNS and DHCP, can also be upgraded to the latest software version across many appliances with a few simple clicks. If there are issues with an upgrade, an administrator can roll back to a previous version of the service since a record of upgrades is maintained in the AMS for each appliance.

Administrators have centralized access and a view of the entire appliance network using the monitoring section of AMS. This centralized control gives administrators quick and easy access to all log and configuration files, remote start and stop of services on appliances, and the ability to quickly take any appliance offline for suspicious behavior as well as reboot appliances from a central location, saving travel costs and time.

Enhances administrator effectiveness

The Alcatel-Lucent VitalQIP Appliance Manager:

- Centralizes the definition of IP addresses and distributes network services such as DNS and DHCP using a single system. This is key to effectively manage network-wide IP information.
- Configures remote DNS and DHCP appliances using centralized data, improving administrator productivity while reducing errors
- Prevents administrators from having to individually access each and every remote machine
- Performs appliance management using the central console that includes the Appliance Management Software

Hardware/software options

The VitalQIP Appliance Manager is offered on redundant, high performance, standard hardware and software configurations to meet the specific requirements of your network. The VitalQIP Appliance Manager 5000 Platform is targeted for demanding environments and provides NEBS compliance while the VitalQIP Appliance Manager model 1200 and model 1000 platforms are designed for typical enterprise applications. The VitalQIP Appliance Manager 500 Platform is ideally suited for retail and small office applications where cost, noise and size are important. VitalQIP also offers the flexibility of a software appliance to take advantage of all the benefits of an hardware appliance architecture installed on a customers hardware of choice and also can be used in virtual environments.



5000 Platform
Powered by two 64-bit multi-core Intel® Xeon® processors in a NEBS-3 compliant 1U form factor platform with mirrored RAID 1, dual power supplies and remote lights out card



1200 Platform
64-bit architecture 1U form factor platform. Intel Xeon X3430 Quad Core 2.4 GHz CPU, 4GB of memory, 250GB SATA HD, DVD drive, 4 GigE Nic cards, dual power supply and remote lights out card

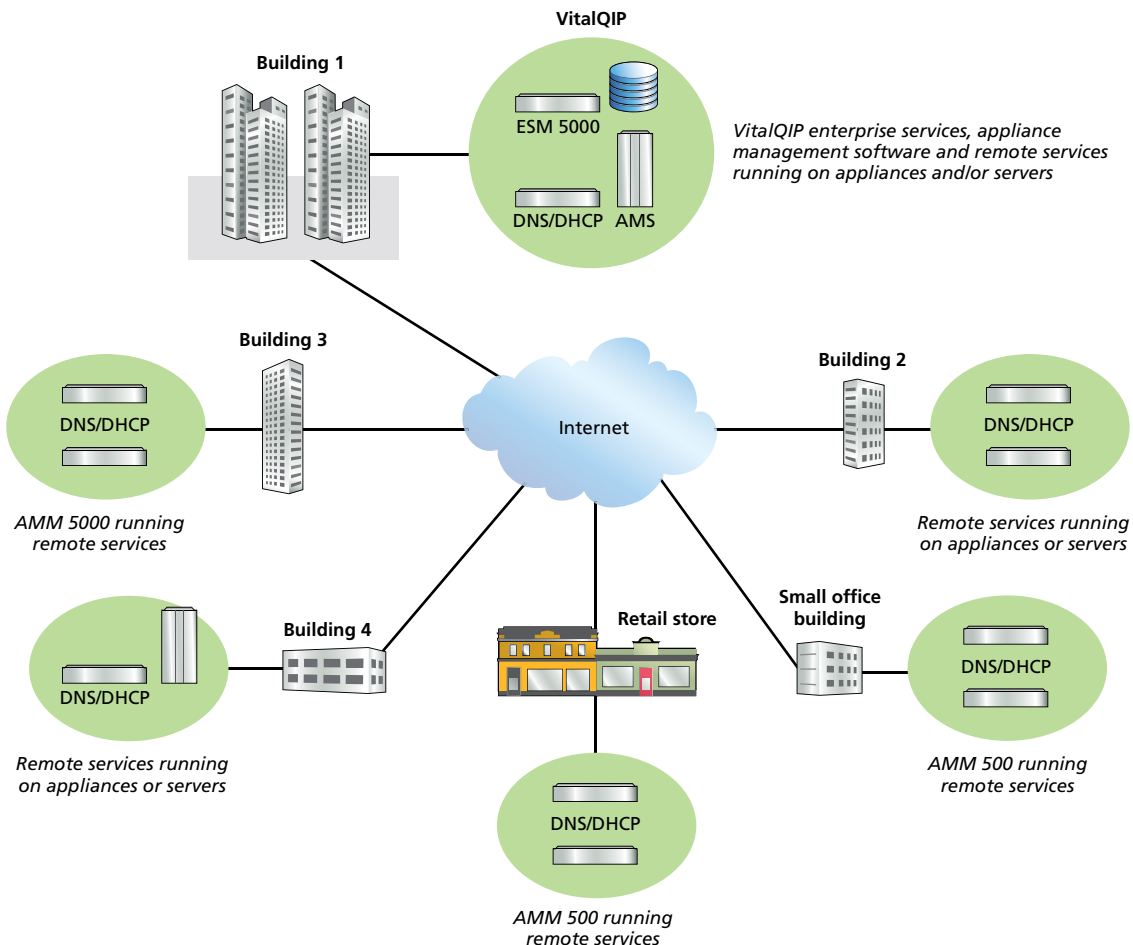


1000 Platform
Powered by a high performance Intel® Core™2 Duo processor on a 1U form factor platform



500 Platform
Powered by an Intel 64-bit Atom processor in a compact desktop chassis

Figure 1. Example of VitalQIP Appliance Manager configuration





Summary of Features and Benefits

Platforms

- Integration with the market leading VitalQIP software
- Centralized appliance management data store to keep track of services and status of remote appliances
- Automated software upgrade capability with rollback options
- Highly secure communication between AMS and appliances with unique appliance key generation
- Logical grouping of appliances for ease of upgrades
- Software version history maintained per appliance in AMS
- Remote start/stop/initialize of services
- High availability DNS using heartbeat and virtual address mechanism
- Retrieval of log/config files from appliances
- Connect, configure and go model for appliance activation
- Syslog redirection enables centralized monitoring of appliances and services
- Software appliance option provides the use of existing corporate standard hardware or virtualization with all the same benefits of the hardware appliance

Services

- VitalQIP Enterprise Services with Sybase database — provides appliance-based IP Address Management
- Industry's highest performance DHCP server — enabling rapid IP address assignment for the delivery of robust IP services
- VitalQIP DNS server (BIND 9 based) — enabling rapid address resolution
 - DNS reliability is enhanced with DNS high availability and anycast features
 - DNS/DHCP probes enable testing and monitoring of DNS/DHCP services
- VitalQIP SNMP service for monitoring DNS/DHCP services and appliance hardware
- TFTP service for file transfer services
- NTP service for time synchronization among appliances and clients
- VitalQIP Auto Discovery — discovers network devices quickly and efficiently

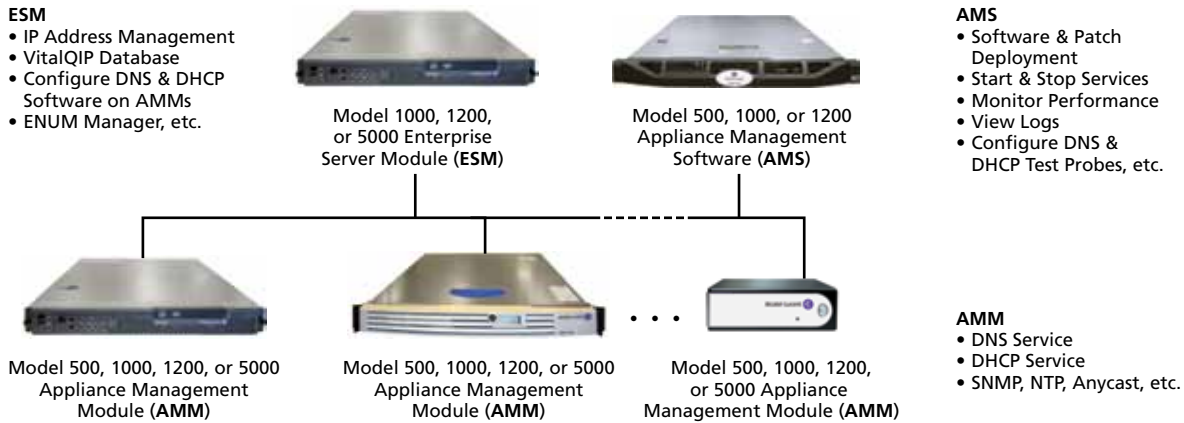
Security

- Security hardened version of Red Hat Linux OS
- Limited port access as well as lockdown of appliance console
- Unique secret key exchanged between centralized software and each appliance for authentication
- Authorized appliance access is granted by centralized AMS administrator

Table 1. VitalQIP Appliance performance – a price performance leading solution

	AMM 5000: NEBS COMPLIANT WITH RAID AND DUAL POWER SUPPLIES	AMM 1200	AMM 1000: STANDARD APPLIANCE	AMM 500: REMOTE APPLIANCE
Leases per second	6400+	12,000+	3000+	1000+
Queries per second	60,000+	100,000+	43,000+	10,000+

Figure 2. VitalQIP Appliance Roles



The VitalQIP Appliance Manager includes the Appliance Management Software (AMS), the Enterprise Server Module (ESM) and the Appliance Management Module (AMM). The AMS is used to manage the appliances in the network. The ESM provides the VitalQIP Enterprise Services, such as the IP Address Management functions, user interface and centralized database support. The AMM provides VitalQIP Remote Services, including DNS, DHCP, SNMP and other services. The AMS is available on an appliance and can also be downloaded and installed on existing hardware. The hardware/software configuration options are summarized in the table below.



Table 2. Hardware/software configuration options

PLATFORM	AMS MANAGEMENT STATION	AMM REMOTE DNS/DHCP SERVICES	ESM VitalQIP ENTERPRISE SOFTWARE	CAPACITY
Model 500	AMS 500	AMM 500	N/A	Powered by an Intel 64-bit Atom processor in a compact desktop chassis
Model 1000	AMS 1000	AMM 1000	ESM 1000	Powered by a high performance Intel® Core™-2 Duo processor on a 1U form factor platform
Model 1200	AMS 1200	AMM 1200	ESM 1200	Powered by a high performance 64-bit architecture 1U form factor platform. Intel Xeon X3430 Quad Core 2.4 GHz CPU, 4GB of memory, 250GB SATA HD, DVD drive, 4 GigE Nic cards, dual power supply and remote lights out card
Model 5000	N/A	AMM 5000	ESM 5000	Powered by two 64-bit multi-core Intel® Xeon® processors in a NEBS-3 compliant 1U form factor platform with mirrored RAID 1, dual power supplies and remote lights out card NEBS compliant (AC or DC)
Software appliance	S-AMS	S-AMM	S-ESM	64-bit Red Hat Linux compatible hardware virtualization



Alcatel-Lucent leverages innovations from Bell Labs and experience and expertise from Worldwide Services to provide high performing and highly scalable solutions that increase IT staff productivity by enabling user technology, and to ensure network and applications performance for improved service availability.

To learn more about these and other management solutions, contact your Alcatel-Lucent sales representative, authorized reseller or sales agent. You can also visit our web site at <http://www.alcatel-lucent.com/vitalqip>.

www.alcatel-lucent.com Alcatel, Lucent, Alcatel-Lucent and the Alcatel-Lucent logo are trademarks of Alcatel-Lucent. All other trademarks are the property of their respective owners. The information presented is subject to change without notice. Alcatel-Lucent assumes no responsibility for inaccuracies contained herein. Copyright © 2010 Alcatel-Lucent. All rights reserved. EMG0591101203 (12)